

For Lease



Retail Suites with Drive Thru

THE RIDGE AT EASTLAND HILLS



**±1,200 - 6,000 SF
Available**

SWQ Meadow Lake Rd. & Cypress Blvd. | Los Lunas, NM 87031

Todd Strickland

todd@sunvista.com | 505 450 1121

Rob Bridges CCIM

rob@sunvista.com | 505 977 5094

NAI SunVista] **Got Space**™

Opening the Door to Commercial Real Estate Excellence

For Lease

SWQ Meadow Lake Rd. & Cypress Blvd. | Los Lunas, NM 87031

PROPERTY

AVAILABLE

±1,200 - 6,000 SF

LEASE RATE

\$22.00 - \$24.00/SF + \$4.00 SF NNN
(\$2,600 - \$2,800/Mo. Including NNN)

HIGHLIGHTS

- Five ±1,200 SF suites/
20' x 60' units
- 16' ceiling heights
- 6:1000 SF parking ratio
- Double-glass entry doors for easy
in-and-out access
- 200-amp, 3-phase power on
interior suites B, C and D
- 400-amp, 3-phase power on end-
cap suites A and E
- 3 miles from Albertson's
- .25 miles from Parish Elementary
- 516 homes within 1 mile
- 1,676 homes within 2 miles
- 4,977 homes within 3 miles
- Tenant improvements dollars
available – See Advisors for details
- Anticipated delivery of March 2027

ZONING S-R

LOCATION

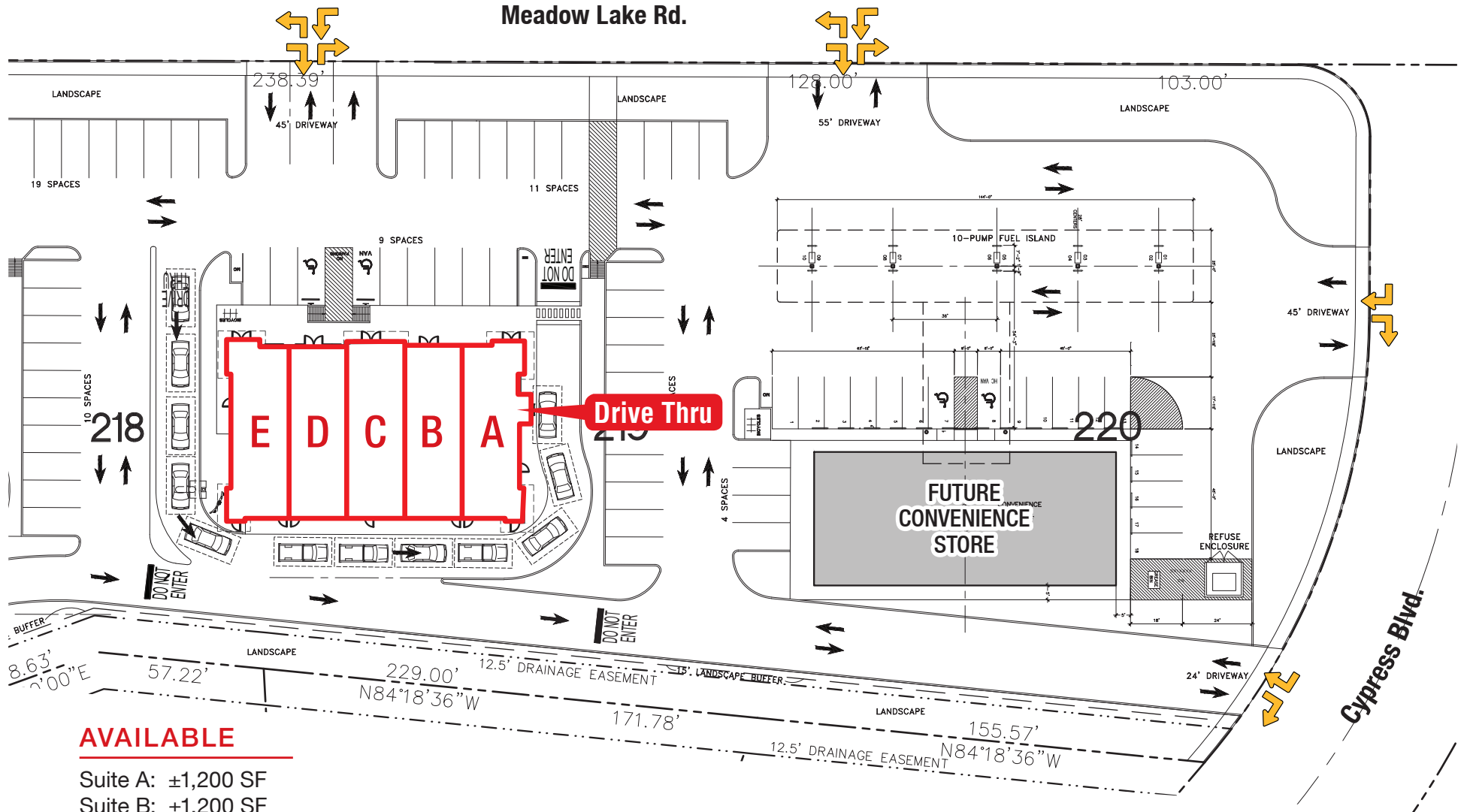
SWQ Meadow Lake Rd. &
Cypress Blvd.



For Lease

SWQ Meadow Lake Rd. & Cypress Blvd. | Los Lunas, NM 87031

SITE PLAN



AVAILABLE

- Suite A: ±1,200 SF
- Suite B: ±1,200 SF
- Suite C: ±1,200 SF
- Suite D: ±1,200 SF
- Suite E: ±1,200 SF

-  Available
-  Leased

For Lease

SWQ Meadow Lake Rd. & Cypress Blvd. | Los Lunas, NM 87031



WITHIN A 5-MILE RADIUS <small>2025 Demographics Forecasted by ESRI</small>	 32,463 Population	 \$76,072 Avg. Household Income	 6,095 Total Employees
--	---------------------------------	---	-------------------------------------



NAI SunVista

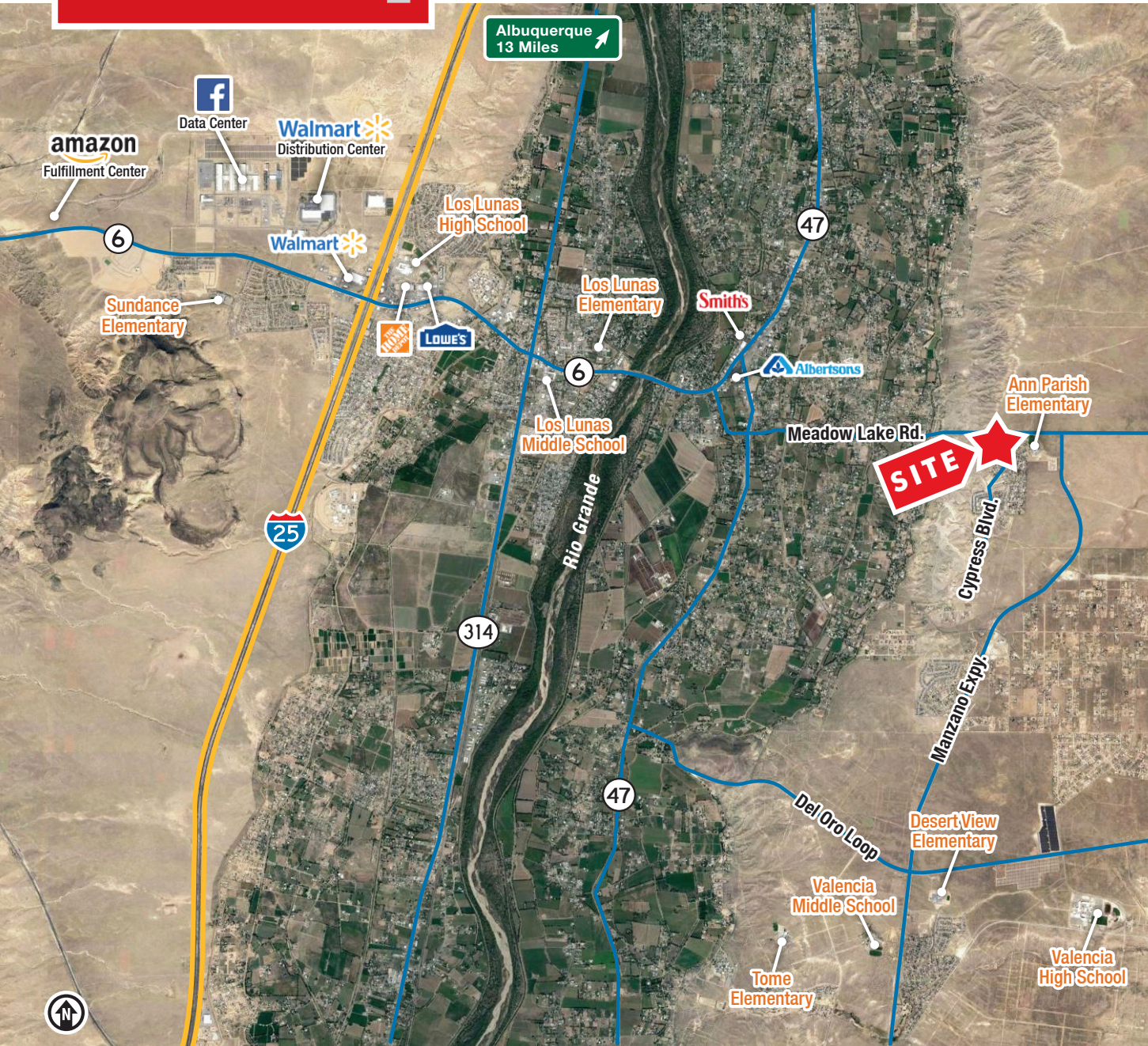
505 878 0001 | sunvista.com
2424 Louisiana Blvd. NE | Suite 100
Albuquerque, NM 87110

Todd Strickland
todd@sunvista.com
505 450 1121

Rob Bridges CCIM
rob@sunvista.com
505 977 5094

For Lease

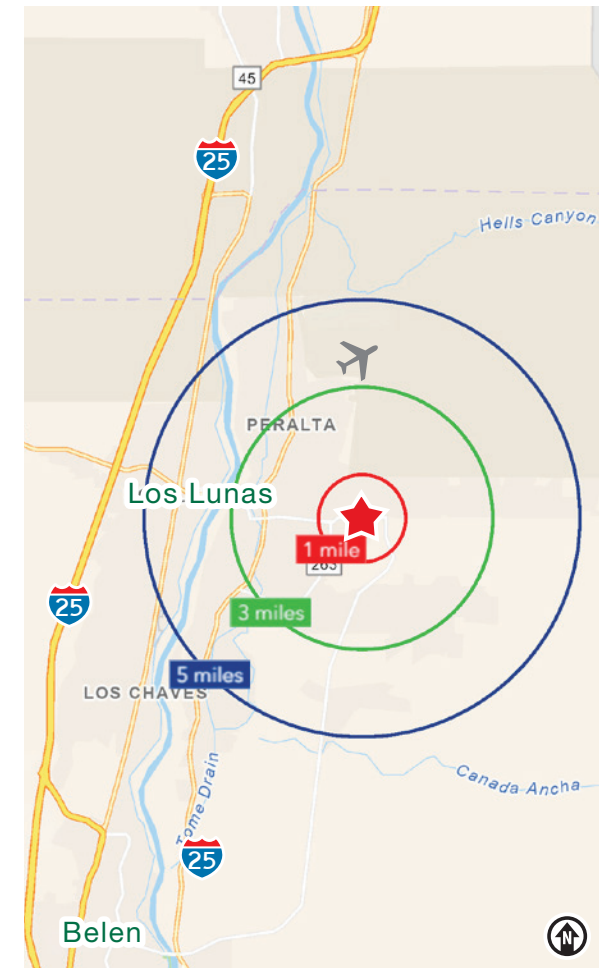
SWQ Meadow Lake Rd. & Cypress Blvd. | Los Lunas, NM 87031



LOCATION

Demographics	1 Mile	3 Mile	5 Mile
Total Population	1,697	14,178	32,463
Average HH Income	\$70,659	\$75,826	\$76,072
Daytime Employment	72	1,711	6,095

2025 Forecasted by Esri



NAI SunVista

505 878 0001 | sunvista.com
 2424 Louisiana Blvd. NE | Suite 100
 Albuquerque, NM 87110

Todd Strickland
todd@sunvista.com
 505 450 1121

Rob Bridges CCIM
rob@sunvista.com
 505 977 5094

Los Lunas

TRADE AREA ANALYSIS

LOS LUNAS | NEW MEXICO

Over the past 40 years, Los Lunas has had a population increase of more than a thousand percent making it one of the fastest-growing communities in New Mexico. This is due in part to the ease of doing business. Not only do they offer competitive incentives, but proudly boast a fast, 2-4-week maximum approval process for commercial and residential plans as well as building permits. Just ask Facebook, Amazon, Niagara Bottling, Wall Colmonoy, Accurate Machine & Tool or any of our other economic-base companies and national retailers. Los Lunas is a small community but with more than 2,000 acres of available commercial land across three business parks with direct access to two major interstates, there are big possibilities on the horizon.



2nd-Fastest
Growing City in
New Mexico



LOS LUNAS BY THE NUMBERS (ESRI 2025 Demographics)



19,539

City Population



7,152

Households



\$82,987

Avg. Household Income



\$54,772

Md. Disposable Income



598

Total Businesses



6,524

Total Employees

“The City is proud to offer a fast, 3 week or less approval process of commercial and residential plans” - Village of Los Lunas, Business Resources | Economic Development

MARKET MOMENTUM

- 287% growth in warehousing and storage jobs within the Albuquerque Metro (Including Los Lunas)
- 10% projected job growth across the region credited in large part to Amazon, Facebook, Netflix, and Intel
- Immediate access to I-25 and close access to I-40 Tradeport Corridor



Amazon’s 1 Million SF fulfillment center is fully operational and serves as a major regional logistics hub. It employs more than 600 people.



Facebook is Expanding

- The first two phases of Facebook’s 2.63 million SF server farm in Los Lunas were completed in 2024.
- Los Lunas has approved expansion incentives and 475 acres of adjacent land has been acquired for future growth.
- New houses, stores, businesses and restaurants have come to the area and more are to follow.