

For Lease

Northeast Heights Office Space

IN THE PRESTIGIOUS MOSSMAN BUILDING



±341 - 3,969 SF
Available

7410 Montgomery Blvd. NE | Albuquerque, NM 87109

Clay Azar CCIM

clay@sunvista.com | 505 480 9777

Lisa Mercer CCIM

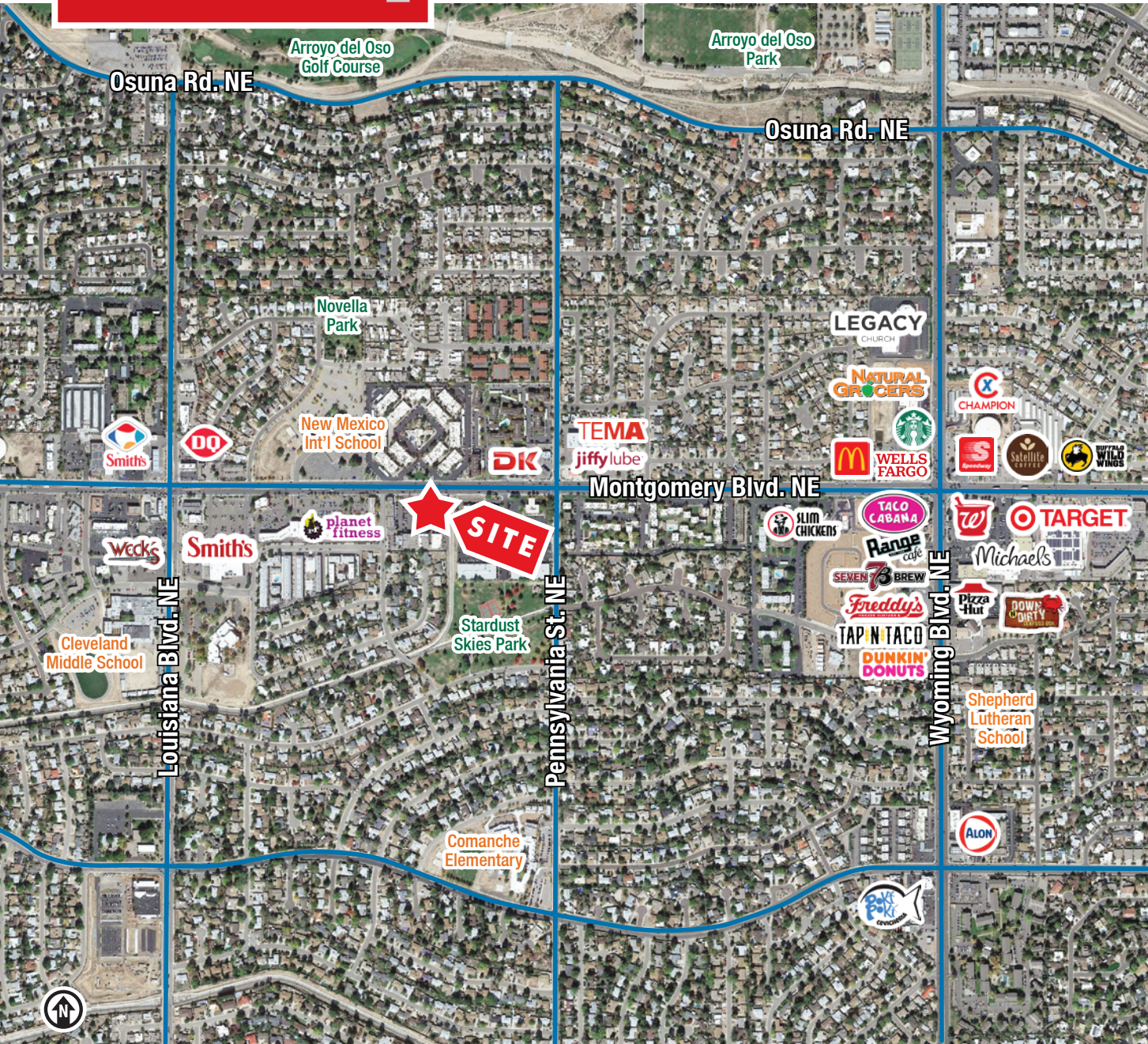
lisa@sunvista.com | 505 235 8503

NAI SunVista] Got Space™

Opening the Door to Commercial Real Estate Excellence

For Lease

7410 Montgomery Blvd. NE | Albuquerque, NM 87109



LOCATION

Demographics	1 Mile	3 Mile	5 Mile
Total Population	14,216	130,600	299,180
Average HH Income	\$106,539	\$90,260	\$99,055
Daytime Employment	4,647	92,376	191,399

2025 Forecasted by Esri



NAI SunVista

505 878 0001 | sunvista.com
 2424 Louisiana Blvd. NE | Suite 100
 Albuquerque, NM 87110

Clay Azar CCIM
clay@sunvista.com
 505 480 9777

Lisa Mercer CCIM
lisa@sunvista.com
 505 235 8503

For Lease

7410 Montgomery Blvd. NE | Albuquerque, NM 87109



NAI SunVista

505 878 0001 | sunvista.com
2424 Louisiana Blvd. NE | Suite 100
Albuquerque, NM 87110

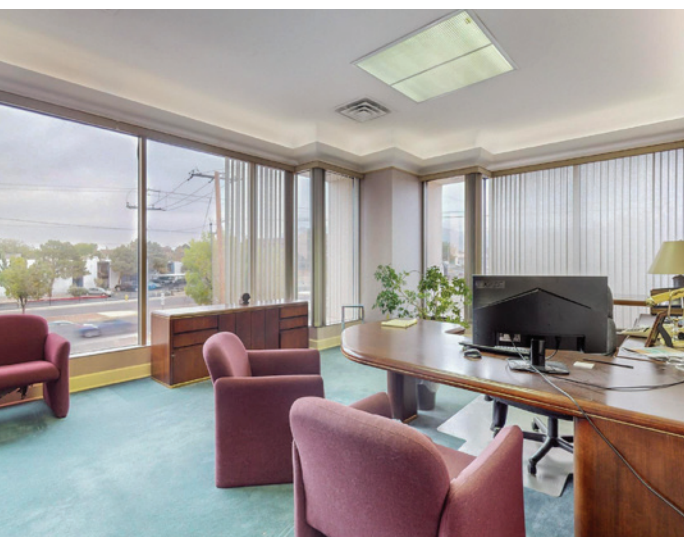
Clay Azar CCIM
clay@sunvista.com
505 480 9777

Lisa Mercer CCIM
lisa@sunvista.com
505 235 8503

For Lease]

7410 Montgomery Blvd. NE | Albuquerque, NM 87109

SUITE 200



NAISunVista

505 878 0001 | sunvista.com
2424 Louisiana Blvd. NE | Suite 100
Albuquerque, NM 87110

Clay Azar CCIM
clay@sunvista.com
505 480 9777

Lisa Mercer CCIM
lisa@sunvista.com
505 235 8503

For Lease

7410 Montgomery Blvd. NE | Albuquerque, NM 87109

SUITE 205



NAI SunVista

505 878 0001 | sunvista.com
2424 Louisiana Blvd. NE | Suite 100
Albuquerque, NM 87110

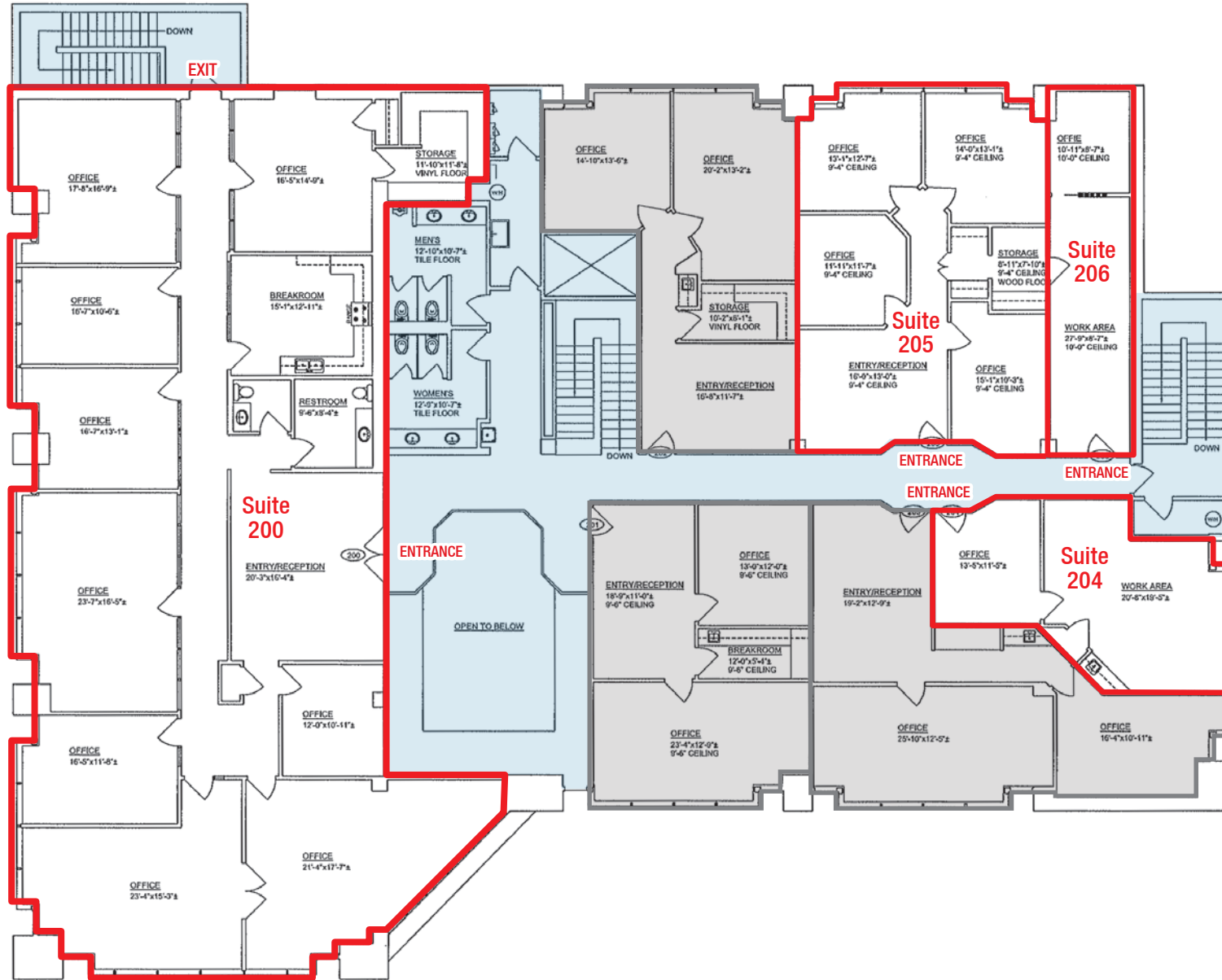
Clay Azar CCIM
clay@sunvista.com
505 480 9777

Lisa Mercer CCIM
lisa@sunvista.com
505 235 8503

For Lease

7410 Montgomery Blvd. NE | Albuquerque, NM 87109

FLOOR PLAN



2ND FLOOR

Suite 200:	±3,969 SF
Suite 204:	±500 SF
Suite 205:	±1,032 SF
Suite 206:	±341 SF
Combined:	±1,373 SF

- Available
- Leased
- Common Area

