

**For
Lease**



Uptown Office Space

ACROSS FROM CORONADO SHOPPING CENTER



2425 San Pedro Dr. NE | Albuquerque, NM 87110

±2,030 RSF Available

NASunVista  **Got Space™**

Opening the Door to Commercial Real Estate Excellence

Shelly Branscom CCIM

shelly@sunvista.com | 505 414 2669

For Lease

2425 San Pedro Dr. NE | Albuquerque, NM 87110



PROPERTY

AVAILABLE

Suite 200: ±2,030 RSF

LEASE RATE

\$16.00/SF Full Service

HIGHLIGHTS

- Beautifully-appointed suite
- Easy access to I-40
- Pylon signage available on San Pedro Dr.
- 7 skylights provide an abundance of natural light
- 5 generously-sized offices with copy/storage room, kitchenette and reception
- Fenced parking (4:1,000 ratio)
- On-site landlord and property management

ZONING MX-M 

LOCATION

NWQ San Pedro Dr. & Uptown Blvd. NE

For Lease

2425 San Pedro Dr. NE | Albuquerque, NM 87110



NAISunVista

505 878 0001 | sunvista.com
2424 Louisiana Blvd. NE | Suite 100
Albuquerque, NM 87110

Shelly Branscom CCIM
shelly@sunvista.com
505 414 2669

For Lease

2425 San Pedro Dr. NE | Albuquerque, NM 87110



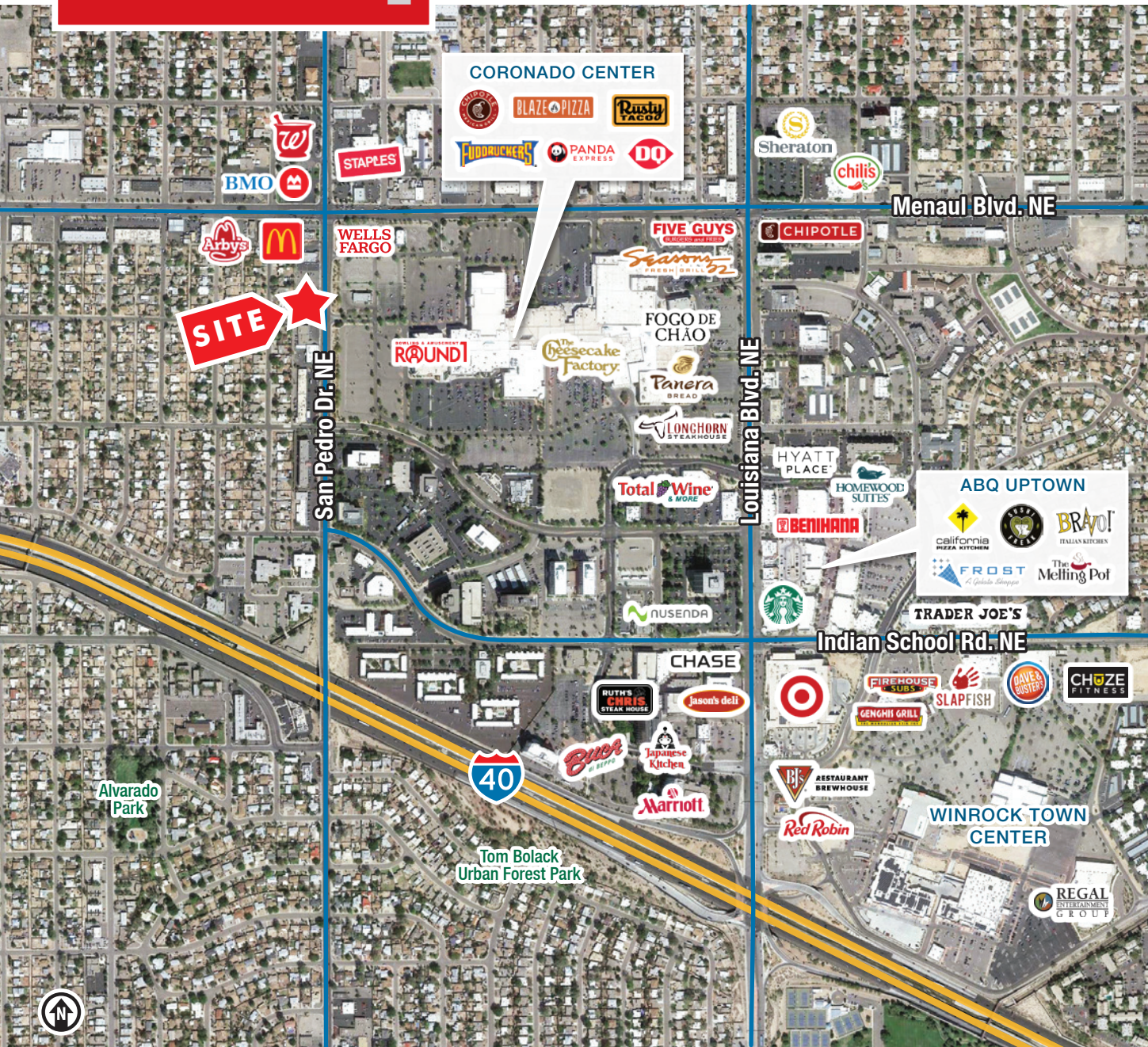
NAI SunVista

505 878 0001 | sunvista.com
2424 Louisiana Blvd. NE | Suite 100
Albuquerque, NM 87110

Shelly Branscom CCIM
shelly@sunvista.com
505 414 2669

For Lease

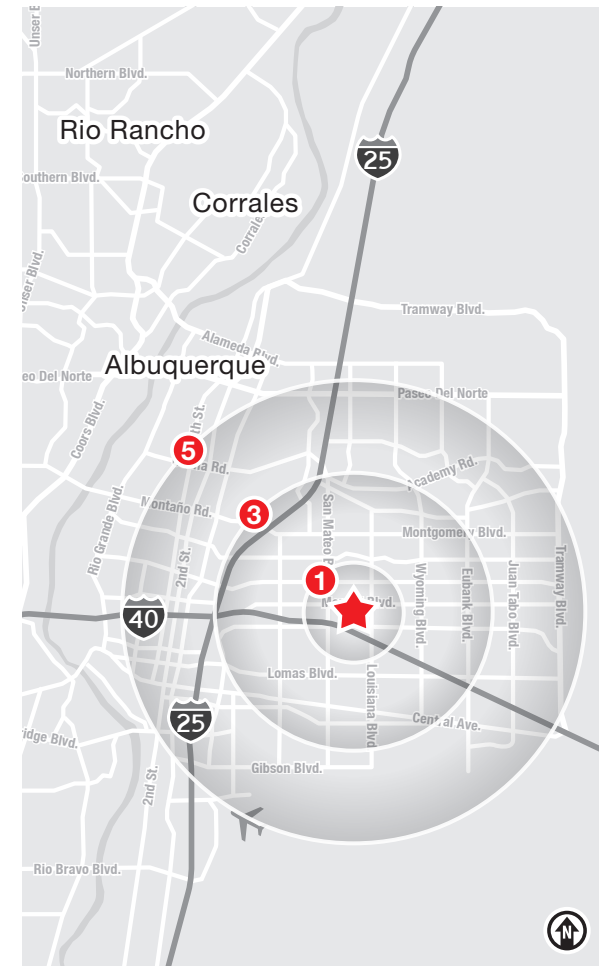
2425 San Pedro Dr. NE | Albuquerque, NM 87110



LOCATION

Demographics	1 Mile	3 Mile	5 Mile
Total Population	12,497	132,224	313,234
Average HH Income	\$81,592	\$80,385	\$86,225
Daytime Employment	17,908	89,706	238,315

2025 Forecasted by Esri

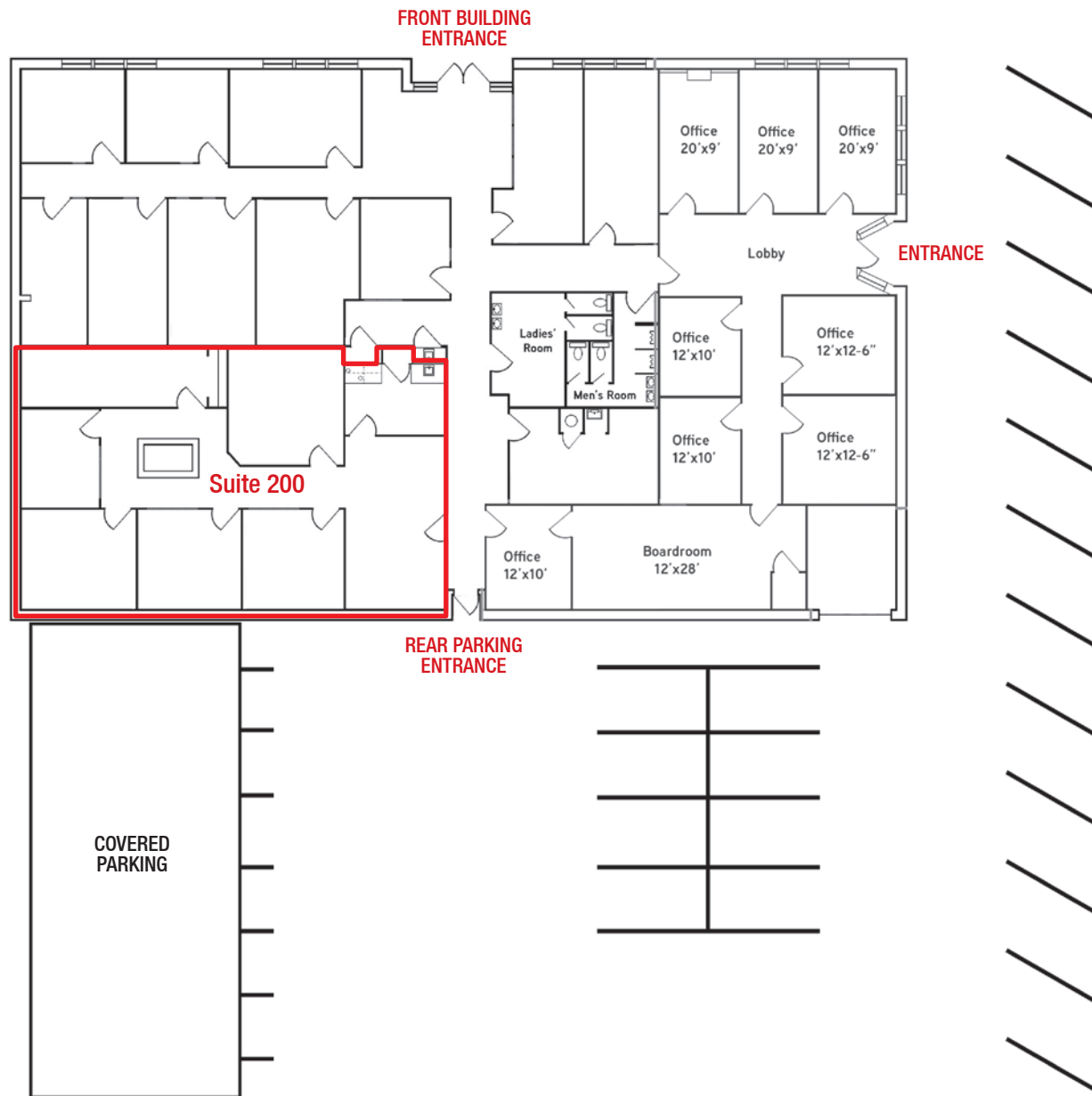


For Lease

2425 San Pedro Dr. NE | Albuquerque, NM 87110

San Pedro Dr. NE

FLOOR PLAN



AVAILABLE

Suite 200: ±2,030 RSF