

For Sale

Highly-Visible Retail/Office Land

LOCATED IN A PRIME RETAIL CORRIDOR



AVAILABLE

Land: ±0.66 Acres

SALE PRICE

\$431,244

ZONING

▪ C-1

HIGHLIGHTS

- Prime exposure to 25,200 vehicles each day
- Close proximity to Walmart, Raising Cane's, and Chick-fil-A
- Strong residential density around the site
- Centrally located in growing Rio Rancho
- All utilities at the property line
- Ideal for office, financial, medical, or retail users

±0.66 Acres Available

SEQ Southern Blvd. & Western Hills Dr. SE | Rio Rancho, NM 87124

NAISunVista **Got Space™**

Opening the Door to Commercial Real Estate Excellence

Alexis Lovato

alexis@sunvista.com | 505 639 6433

For Sale

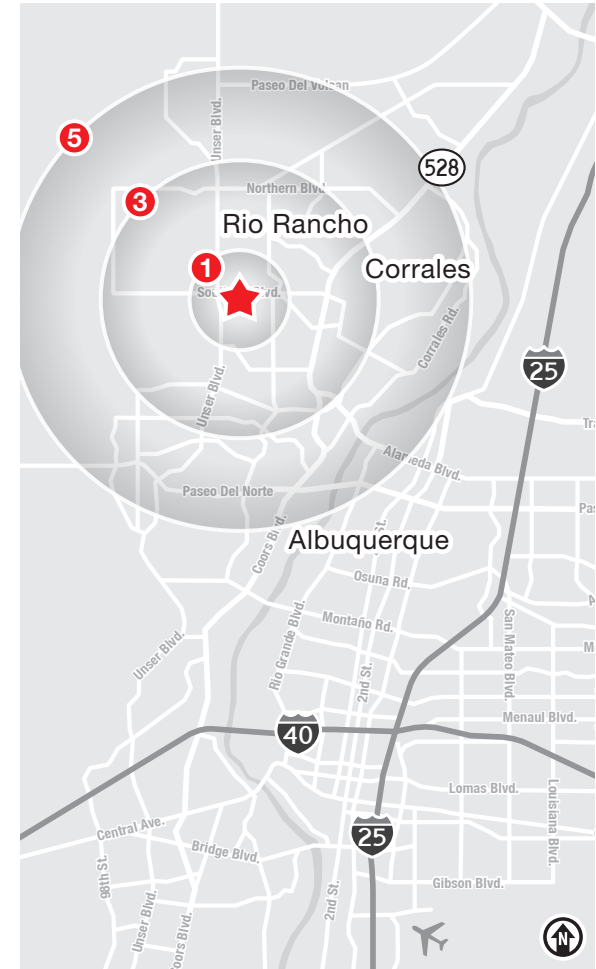
SEQ Southern Blvd. & Western Hills Dr. SE | Rio Rancho, NM 87124



LOCATION

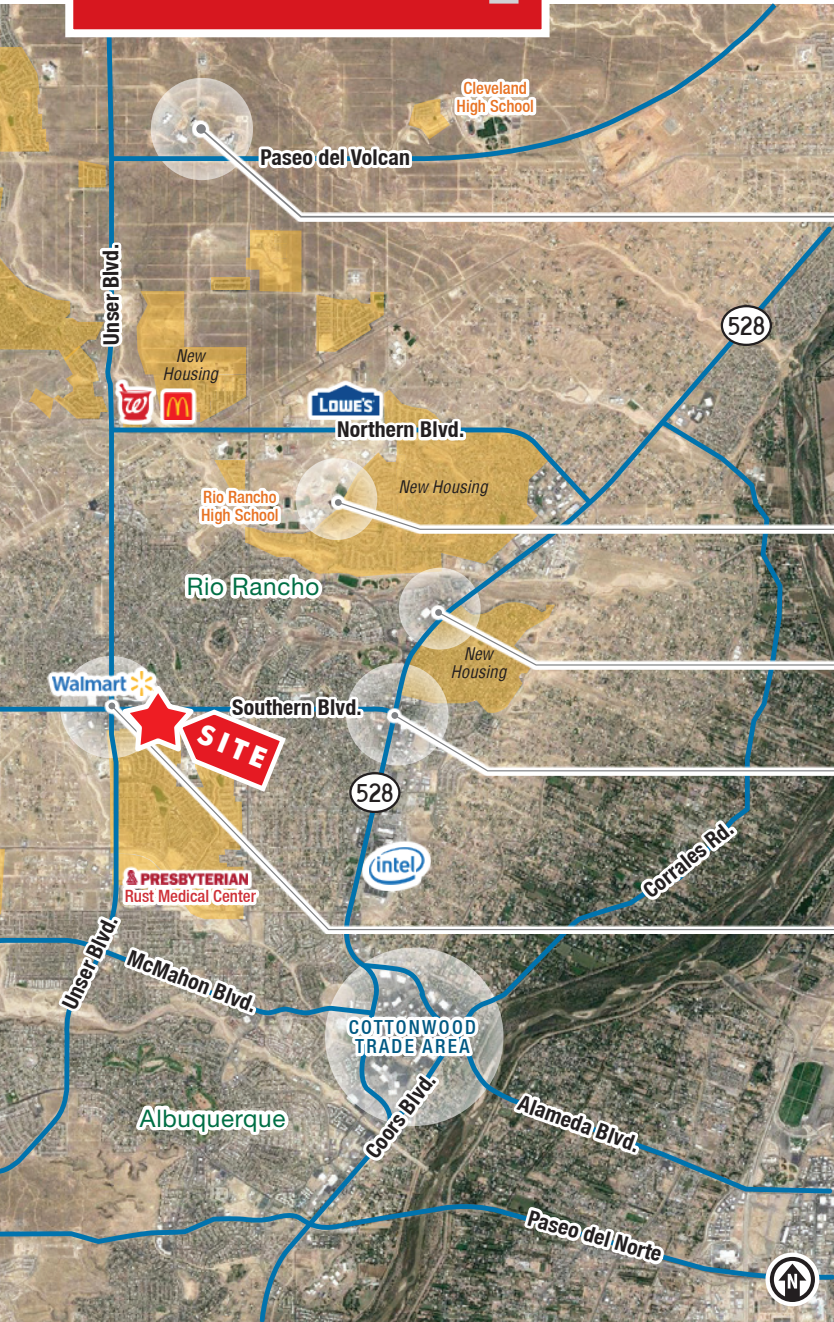
Demographics	1 Mile	3 Mile	5 Mile
Total Population	12,862	84,148	157,063
Average HH Income	\$112,566	\$108,756	\$111,090
Daytime Employment	3,509	20,878	39,748

2025 Forecasted by Esri



For Sale

SEQ Southern Blvd. & Western Hills Dr. SE | Rio Rancho, NM 87124



Rio Rancho City Center



Santa Ana Star Center



CNM West Campus



UNM Sandoval Medical Center



Loma Colorado Library



Rio Rancho Aquatic Center



Rio Rancho Sports Complex



Prominent Retailers



Intel Rio Rancho



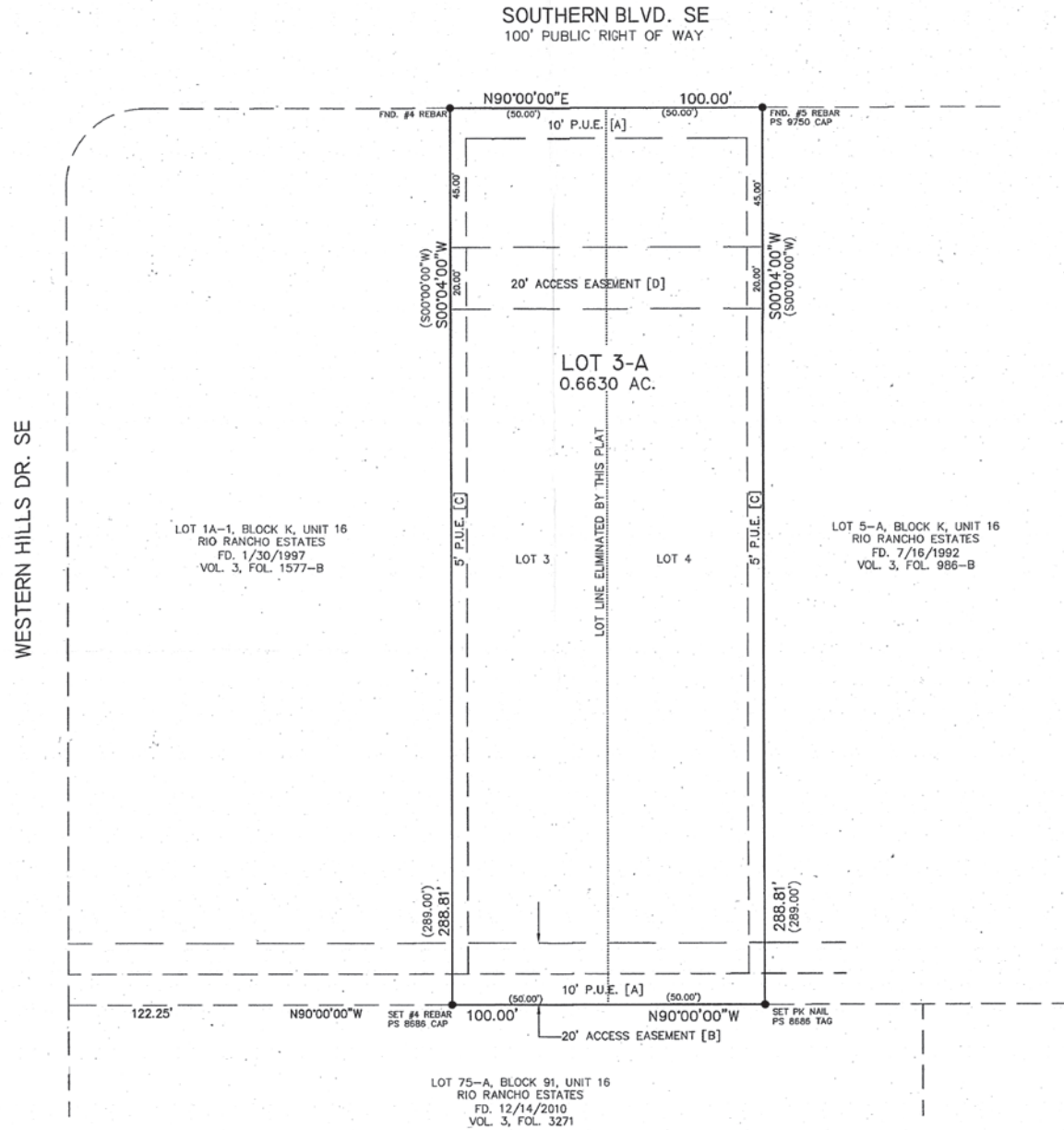
Presbyterian Rust Medical Center



For Sale

SEQ Southern Blvd. & Western Hills Dr. SE | Rio Rancho, NM 87124

SITE SURVEY



AVAILABLE

Land: ±0.66 Acres



Rio Rancho

TRADE AREA ANALYSIS

RIO RANCHO | THE CITY OF VISION

The City of Rio Rancho is part of the Albuquerque Metropolitan Statistical Area. At less than 45 years old, Rio Rancho is considered the fastest-growing city in New Mexico. The City is strategically located in the northwest quadrant of the MSA and comprises more than 100 square miles of land. The City is just 45 minutes from Santa Fe, the cultural center of the Southwest. Rio Rancho's adjacency to Albuquerque allows it to draw from the largest labor pool in New Mexico — approximately 400,000 workers. The metro area offers a capable and quality workforce to prospective employers.



Fastest
Growing City in
New Mexico



RIO RANCHO BY THE NUMBERS (ESRI 2025 Demographics)



114,160
City Population



42,536
Households



\$110,047
Avg. Household Income



\$69,330
Md. Disposable Income



2,339
Total Businesses



26,418
Total Employees

Rio Rancho is a High-Growth, Underserved Trade Area



Intel Corporation is investing **\$3.5 billion** to upgrade and expand its Rio Rancho operations.



- More than **1,000 new homes** in development
- High-income neighborhoods and schools
- Limited land in Albuquerque



Presbyterian Rust Medical Center is planning to expand to 1.2 million SF. It's currently 63% complete and 25 years ahead of schedule.



A commitment to quality of life with new parks such as A Park Above, Black Arroyo Wildlife Park and Gateway Park



STRENGTHS

- ↑ Rio Rancho is a business-friendly city
- ↑ Low crime rates
- ↑ Excellent public education system
- ↑ Diverse housing options
- ↑ Growing list of quality-of-life amenities

CHALLENGES

- ↓ Rio Rancho experiences significant retail leakage of approx. **\$400 million** into the City of Albuquerque.

OPPORTUNITIES

- ➔ Investors can bridge the gap of needs and retail services in Rio Rancho