

**For  
Lease**



## Small Uptown Suites Available

IDEAL FOR SMALL BUSINESSES



**3 MONTHS FREE RENT!**  
WITH A 3-YEAR LEASE

Limited time offer, see Advisors for details.

**±520 - 820 SF  
Available**

1803 Louisiana Blvd. NE | Albuquerque, NM 87110

**NAISunVista** ] **Got Space™**

Opening the Door to Commercial Real Estate Excellence

**Danaë Fernández**

danae@sunvista.com | 505 604 8766

**Micah Gray**

micah@sunvista.com | 505 338 9878

For Lease

1803 Louisiana Blvd. NE | Albuquerque, NM 87110



## PROPERTY

### AVAILABLE

Suite A-1:	±820 SF	\$900/Mo.
Suite A-2-A:	±520 SF	\$600/Mo.
Suite D-1:	±820 SF	\$900/Mo.

(Tenant pays gas & electric)

### HIGHLIGHTS

- Private offices with in-suite restrooms
- Windows for natural light
- Prime Uptown location with great foot traffic
- Walking distance to Jerry Cline Park
- Minutes from ABQ Uptown
- Just one minute to I-40
- Building signage available
- Minutes from ABQ Uptown shopping & multiple restaurants to satisfy any appetite
- Perfect for small business user

**ZONING** [MX-M](#) 

### LOCATION

NWC Louisiana Blvd. &  
Constitution Ave. NE

**NAI**SunVista

505 878 0001 | [sunvista.com](#)      
2424 Louisiana Blvd. NE | Suite 100 | Albuquerque, NM 87110

**Danaë Fernández**  
danae@sunvista.com  
505 604 8766

**Micah Gray**  
micah@sunvista.com  
505 338 9878

# For Lease

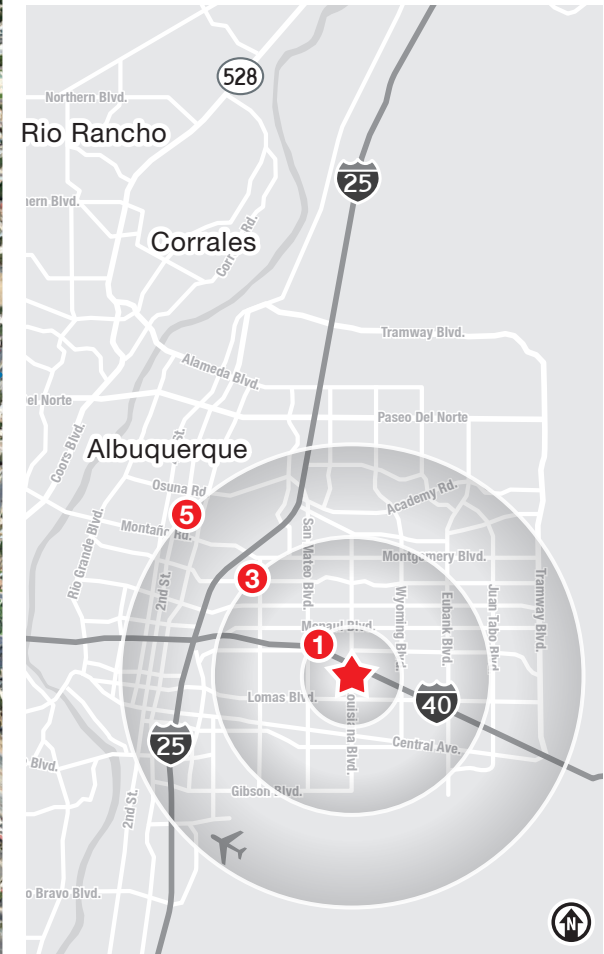
1803 Louisiana Blvd. NE | Albuquerque, NM 87110



## LOCATION

Demographics	1 mile	3 mile	5 mile
Total Population	13,454	137,431	291,946
Average HH Income	\$69,828	\$79,244	\$83,864
Daytime Employment	15,448	81,252	213,047

2025 Forecasted by Esri



**NAI** SunVista

505 878 0001 | [sunvista.com](http://sunvista.com) |   
 2424 Louisiana Blvd. NE | Suite 100 | Albuquerque, NM 87110

**Danaë Fernández**  
 danae@sunvista.com  
 505 604 8766

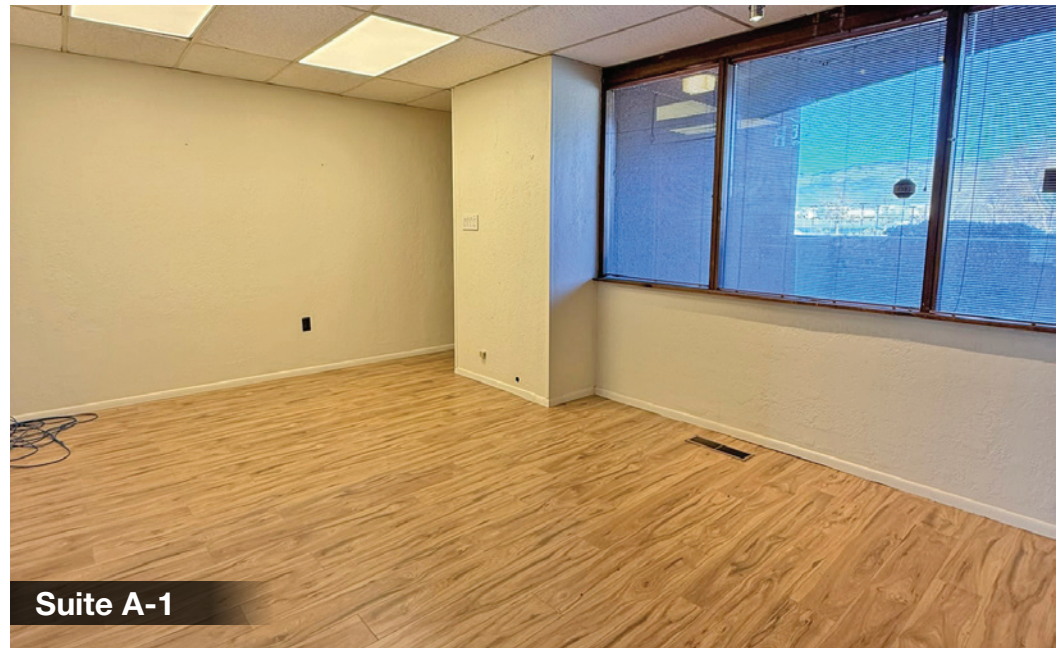
**Micah Gray**  
 micah@sunvista.com  
 505 338 9878

**For Lease**

1803 Louisiana Blvd. NE | Albuquerque, NM 87110



Suite A-1



Suite A-1



Suite A-1



Suite A-1

**For Lease**

1803 Louisiana Blvd. NE | Albuquerque, NM 87110



Suite A-2-A



Suite A-2-A



Suite A-2-A

**For Lease**

1803 Louisiana Blvd. NE | Albuquerque, NM 87110



Suite D-1



Suite D-1



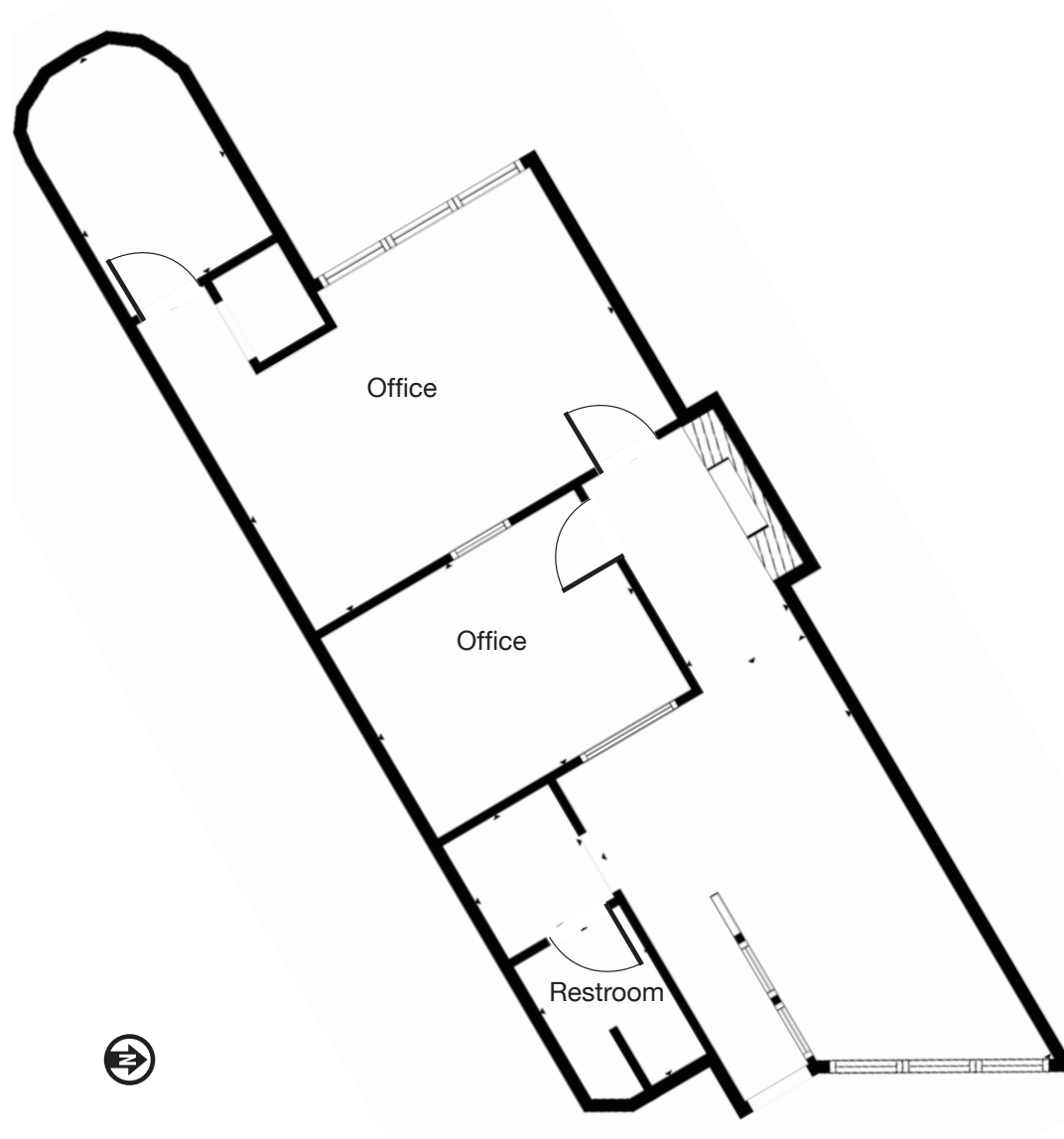
Suite D-1



Suite D-1

**For Lease**

1803 Louisiana Blvd. NE | Albuquerque, NM 87110



## **FLOOR PLAN**

Suite A-1: ±820 SF

*\*Floor plan not to scale*

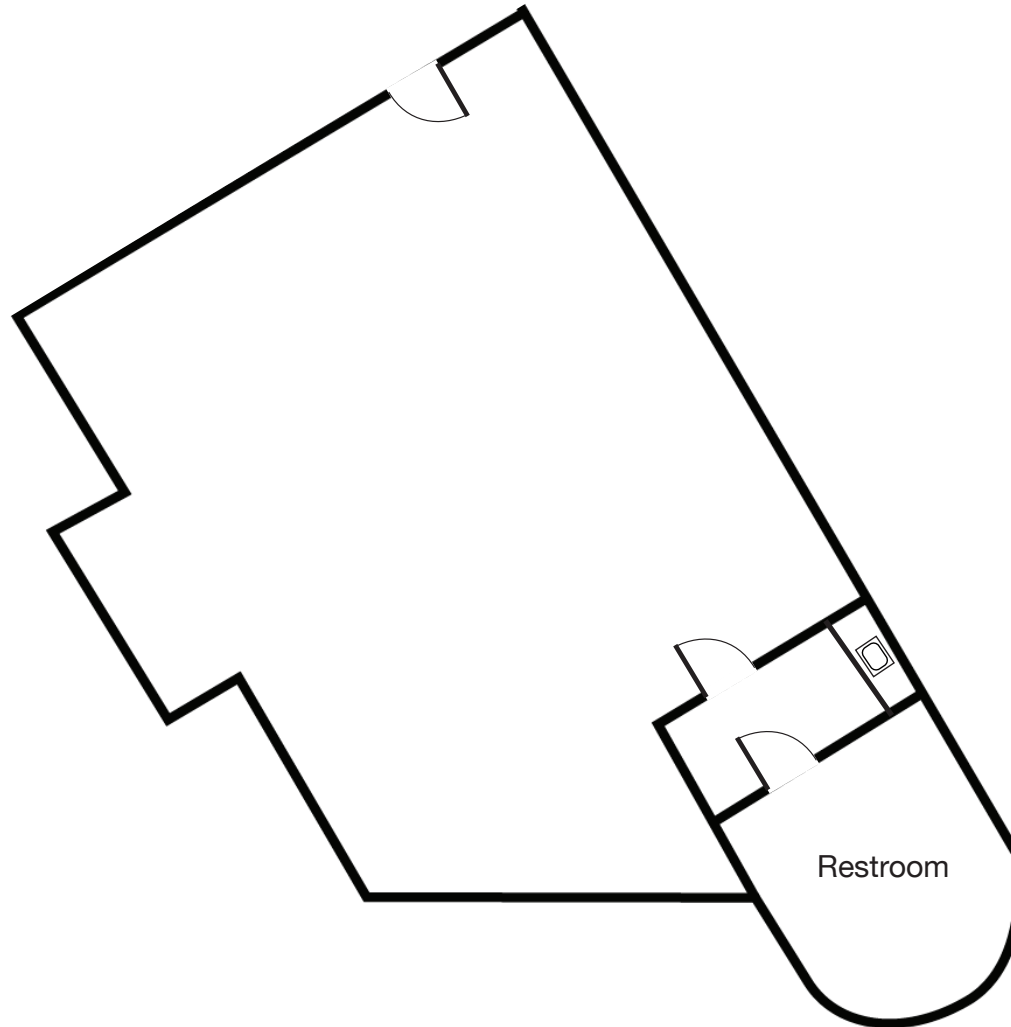
**For Lease**

1803 Louisiana Blvd. NE | Albuquerque, NM 87110

## **FLOOR PLAN**

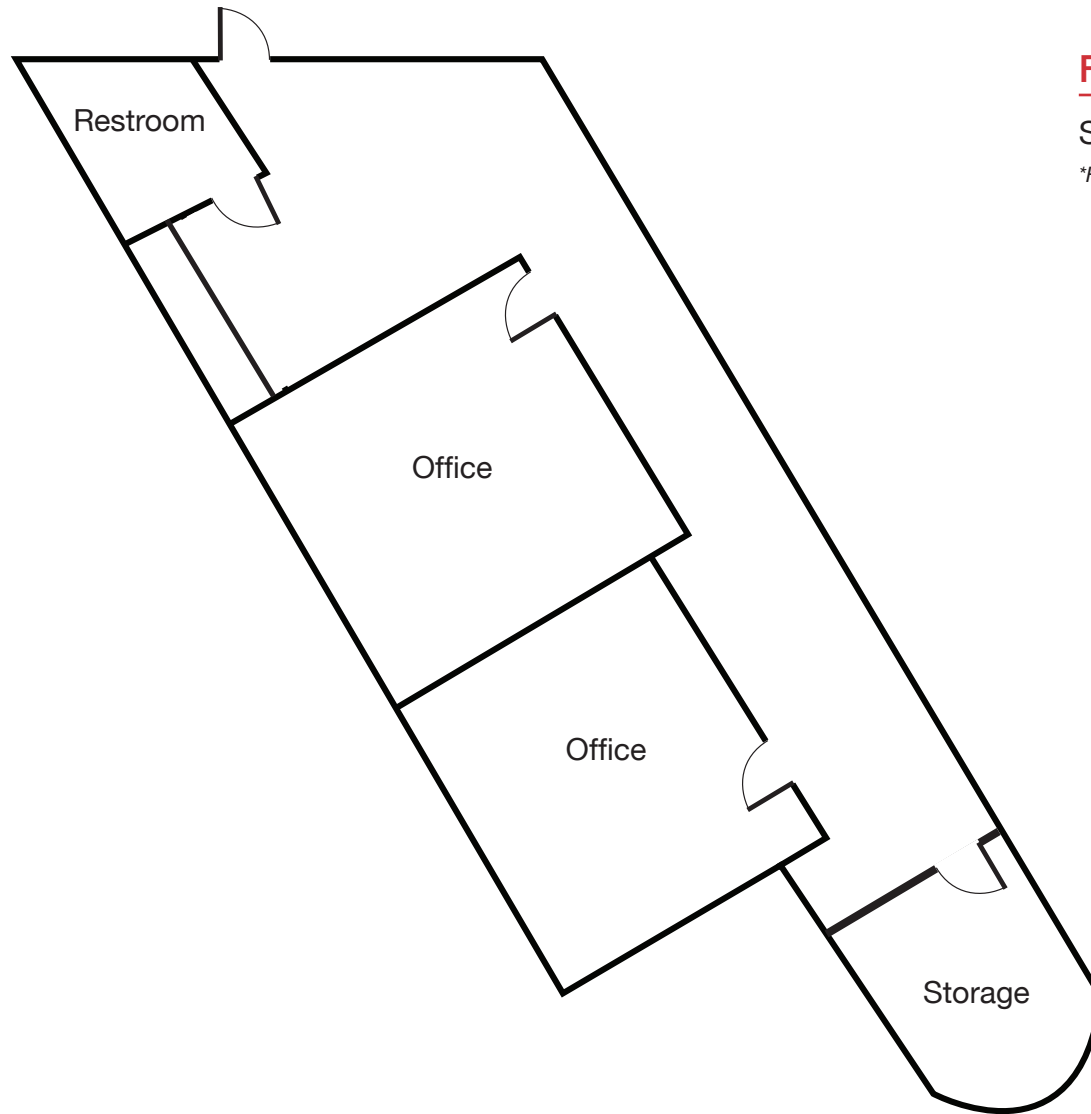
Suite A-2-A: ±520 SF

*\*Floor plan not to scale*



**For Lease**

1803 Louisiana Blvd. NE | Albuquerque, NM 87110



**FLOOR PLAN**

Suite D-1: ±820 SF

*\*Floor plan not to scale*

