

# For Lease

## Class-A Office Space Close to Home

LESLIE PLAZA – CONVENIENT FAR NE HEIGHTS LOCATION



**2 MONTHS FREE RENT!**  
WITH A 5-YEAR LEASE

Limited time offer, see Advisors for details.

5600 Eubank Blvd. NE | Albuquerque, NM 87111

**NAI SunVista** ] **Got Space™**

Opening the Door to Commercial Real Estate Excellence

**±2,615 SF Available**

**Todd Strickland**

todd@sunvista.com | 505 450 1121

**Rob Bridges CCIM**

rob@sunvista.com | 505 977 5094

# For Lease

5600 Eubank Blvd. NE | Albuquerque, NM 87111



## PROPERTY

### AVAILABLE

Suite 280: ±2,615 SF

### LEASE RATE

\$25.00/SF Full Service  
(\$5,447.92/Month)  
Includes 5-day-a-week janitorial

### HIGHLIGHTS

- Just minutes from North Albuquerque Acres, Sandia Heights, High Desert and Tanoan
- Inviting “Class A” finishes with warm wood tones and an abundance of natural light
- Corner office space
- 6 offices, conference room, reception area and storage
- Common-area conference room also available on first-come, first-served basis
- 3.4:1000 parking ratio
- 31 covered parking spaces, 2 of which are reserved for Suite 280

**ZONING** MX-T 

### LOCATION

SWQ Eubank Blvd. &  
Layton Ave. NE

**NAI SunVista**

505 878 0001 | [sunvista.com](http://sunvista.com)  
2424 Louisiana Blvd. NE | Suite 100  
Albuquerque, NM 87110

**Todd Strickland**  
todd@sunvista.com  
505 450 1121

**Rob Bridges** CCIM  
rob@sunvista.com  
505 977 5094

**For Lease**

5600 Eubank Blvd. NE | Albuquerque, NM 87111



**NAISunVista**

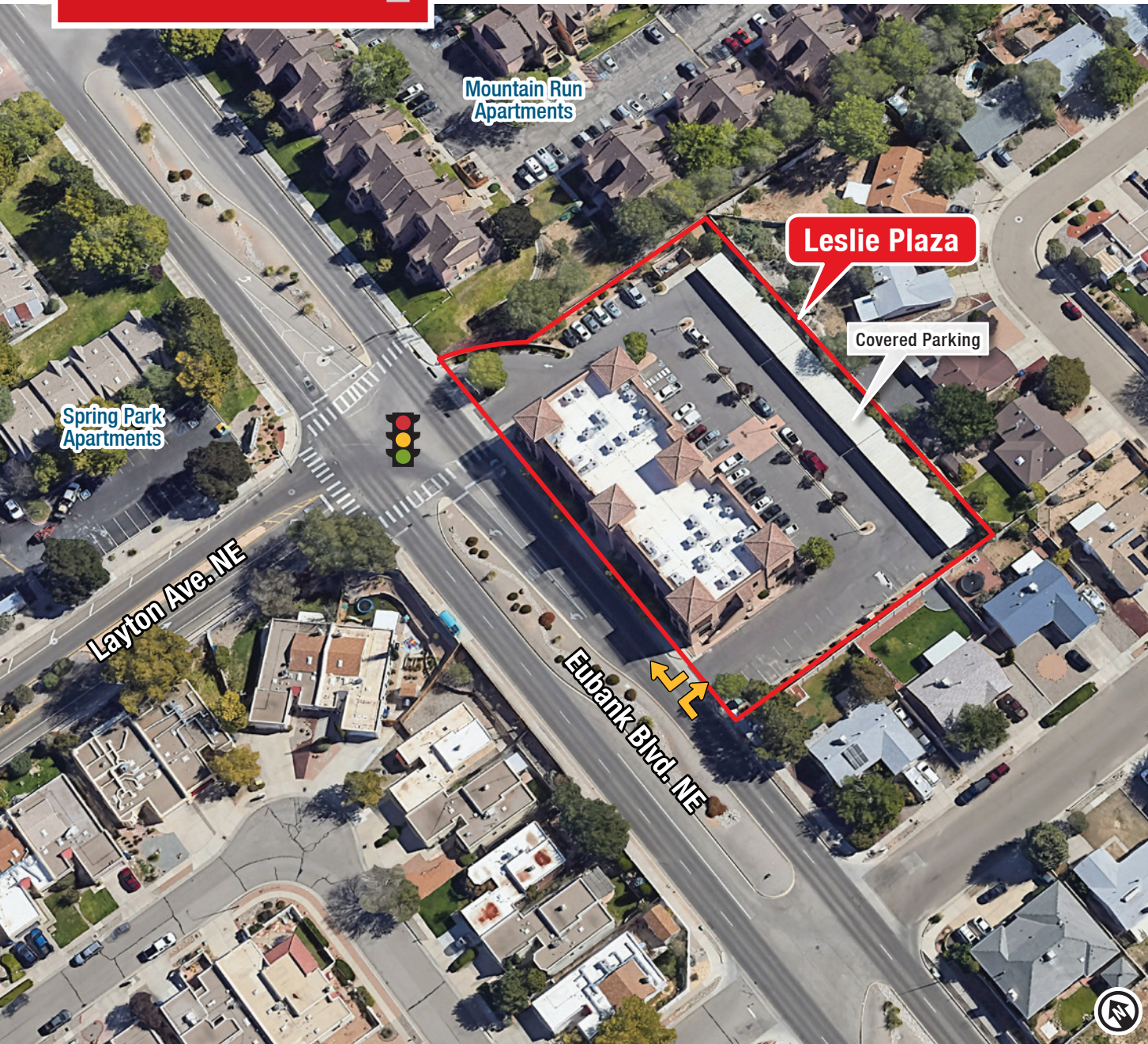
505 878 0001 | [sunvista.com](http://sunvista.com)  
2424 Louisiana Blvd. NE | Suite 100  
Albuquerque, NM 87110

**Todd Strickland**  
[todd@sunvista.com](mailto:todd@sunvista.com)  
505 450 1121

**Rob Bridges CCIM**  
[rob@sunvista.com](mailto:rob@sunvista.com)  
505 977 5094

# For Lease

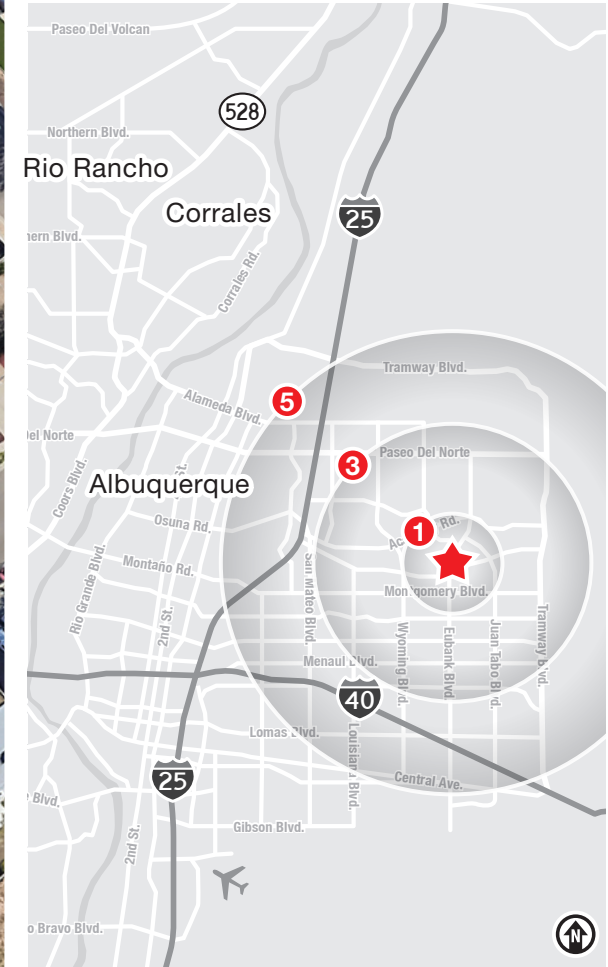
5600 Eubank Blvd. NE | Albuquerque, NM 87111



## LOCATION

Demographics	1 Mile	3 Mile	5 Mile
Total Population	18,993	118,927	228,879
Average HH Income	\$109,366	\$118,807	\$105,455
Daytime Employment	3,830	34,427	127,762

2024 Forecasted by Esri



**NAI SunVista**

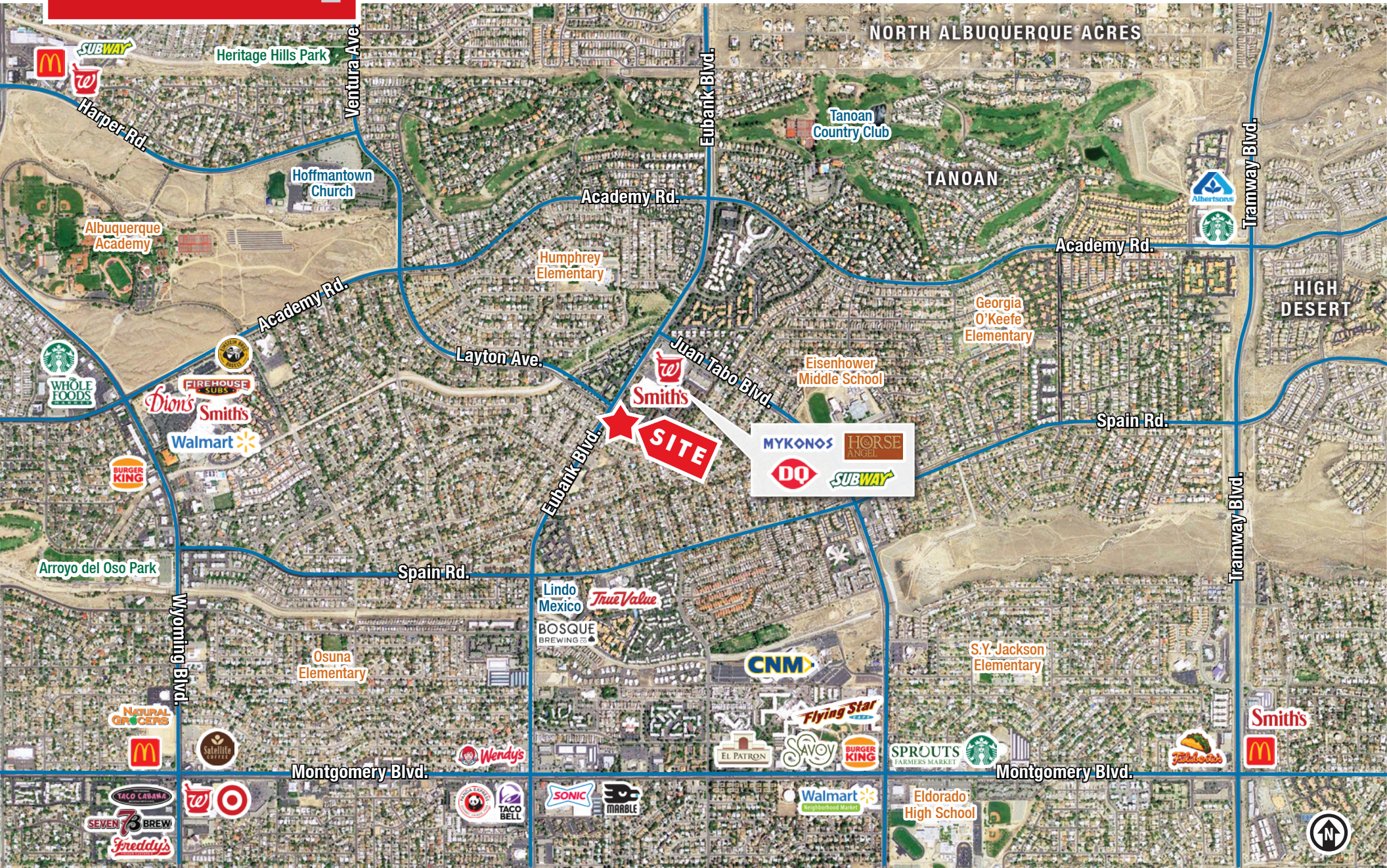
505 878 0001 | [sunvista.com](http://sunvista.com)  
2424 Louisiana Blvd. NE | Suite 100  
Albuquerque, NM 87110

**Todd Strickland**  
[todd@sunvista.com](mailto:todd@sunvista.com)  
505 450 1121

**Rob Bridges CCIM**  
[rob@sunvista.com](mailto:rob@sunvista.com)  
505 977 5094

**For Lease**

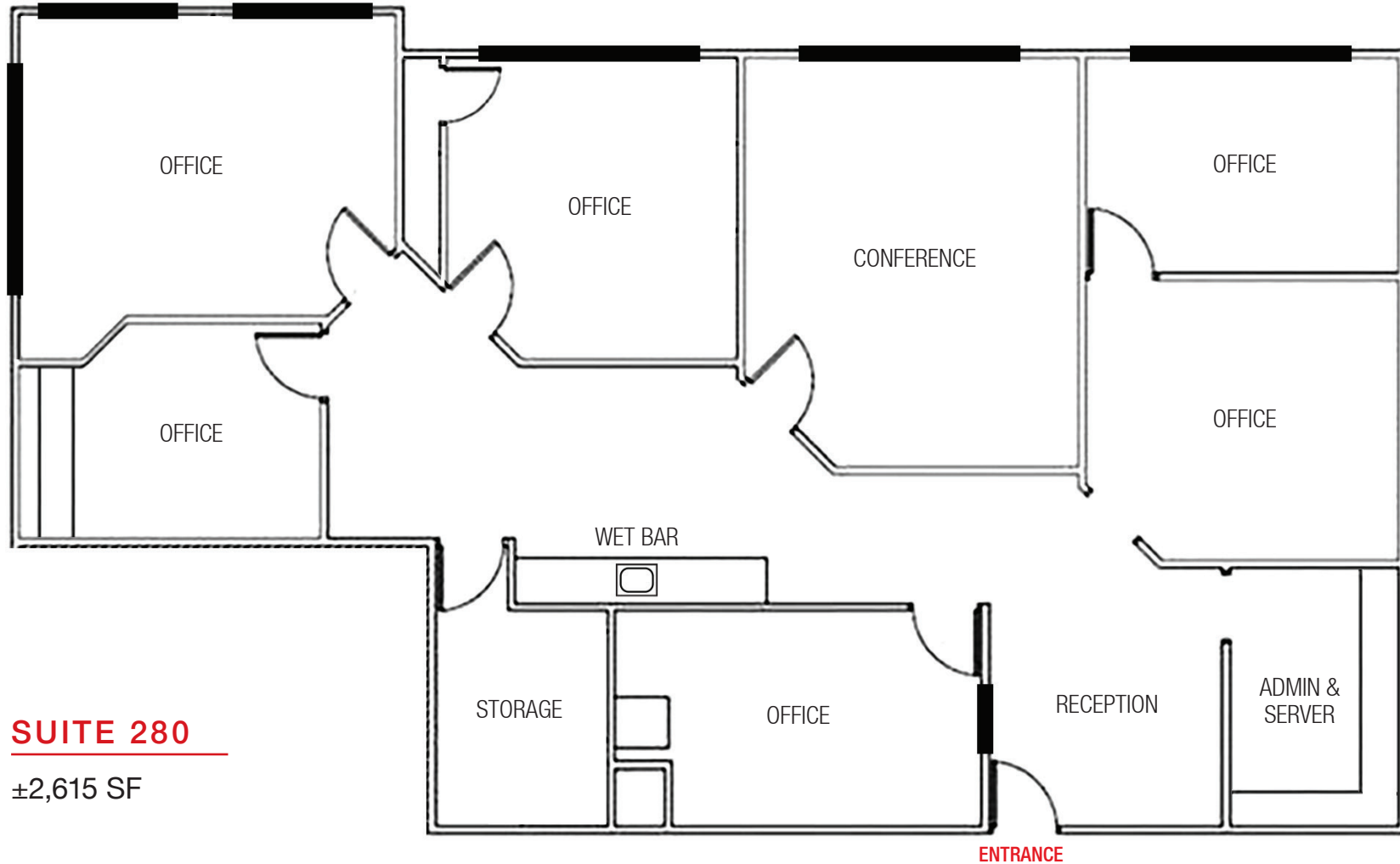
5600 Eubank Blvd. NE | Albuquerque, NM 87111



**For Lease**

5600 Eubank Blvd. NE | Albuquerque, NM 87111

**FLOOR PLAN**



**SUITE 280**

±2,615 SF