

# For Lease



## Uptown Professional Office Space

LOUISIANA PLACE NEAR I-40 & LOUISIANA BLVD.



**±941 - 3,933 RSF Available**  
**\$18.50/SF Full Service**

**DJ Brigman** SIOR, CCIM  
DJ@sunvista.com | 505 998 1562

**Dave Hill** CCIM, SIOR  
dave@sunvista.com | 505 238 6413

1700 Louisiana Blvd. NE | Albuquerque, NM 87110

**NASunVista** ] **Got Space™**

Opening the Door to Commercial Real Estate Excellence

For Lease

## UPTOWN PROFESSIONAL OFFICE SPACE

1700 Louisiana Blvd. NE | Albuquerque, NM 87110



### HIGHLIGHTS

#### LEASE RATE

\$18.50/SF Full Service

#### AVAILABLE

##### 1ST FLOOR

- Suite 110: ±3,933 RSF
- Suite 130: ±3,011 RSF

##### 2ND FLOOR

- Suite 210: ±973 RSF
- Suite 230: ±2,016 RSF

##### 3RD FLOOR

- Suite 310: ±1,449 RSF
- Suite 340: ±941 RSF

#### PROPERTY FEATURES

- Convenient access to I-40
- Uptown amenities just minutes away including restaurants, grocery stores, shopping centers
- Spectacular views of the Sandias
- Ample windows
- Parking ratio: 4.3:1,000
- Building and monument signage available for large tenant

ZONING [MX-M](#) 

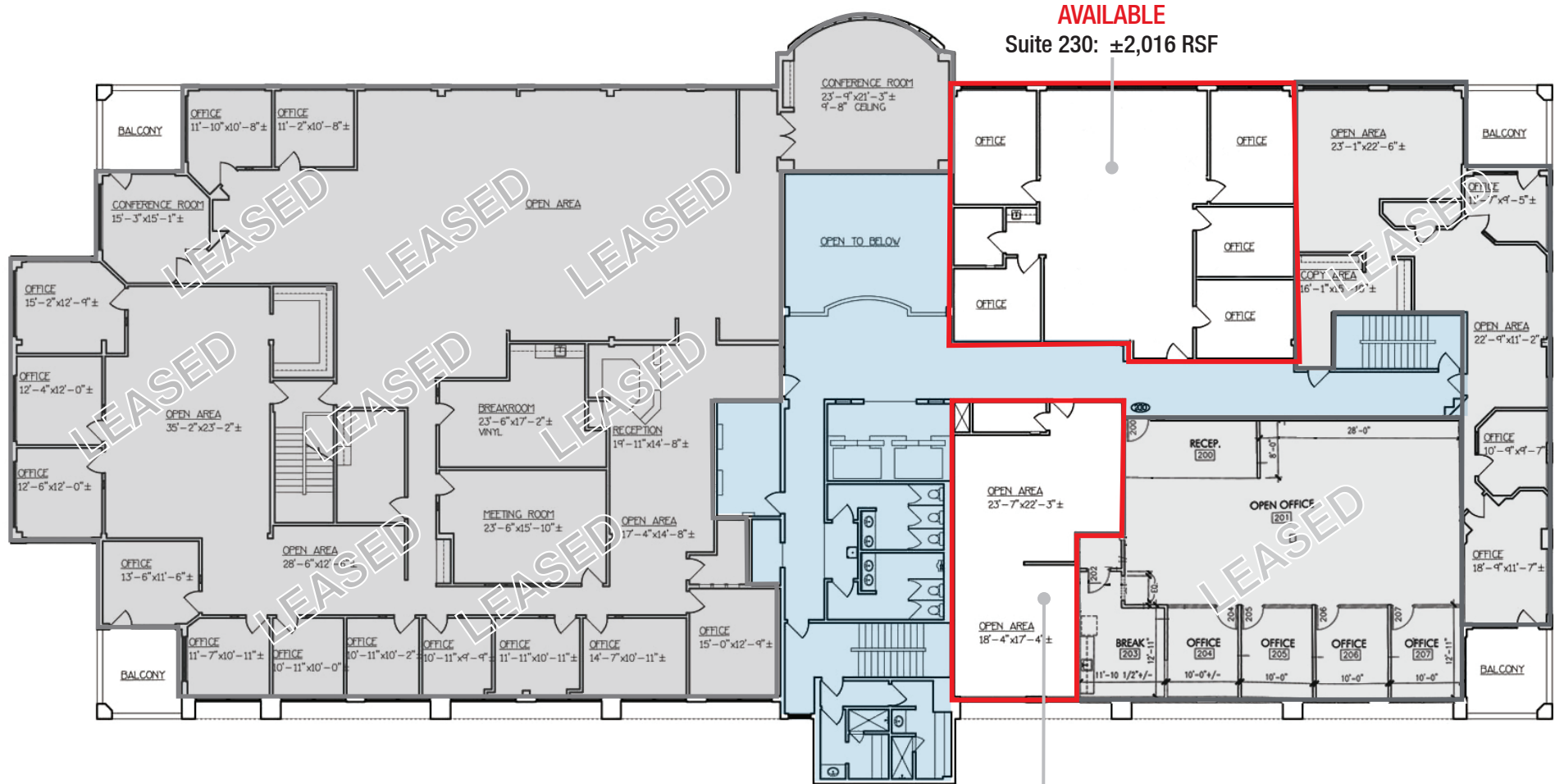


# For Lease

## UPTOWN PROFESSIONAL OFFICE SPACE

1700 Louisiana Blvd. NE | Albuquerque, NM 87110

### 2ND FLOOR



**AVAILABLE**  
Suite 230: ±2,016 RSF

**AVAILABLE**  
Suite 210: ±973 RSF

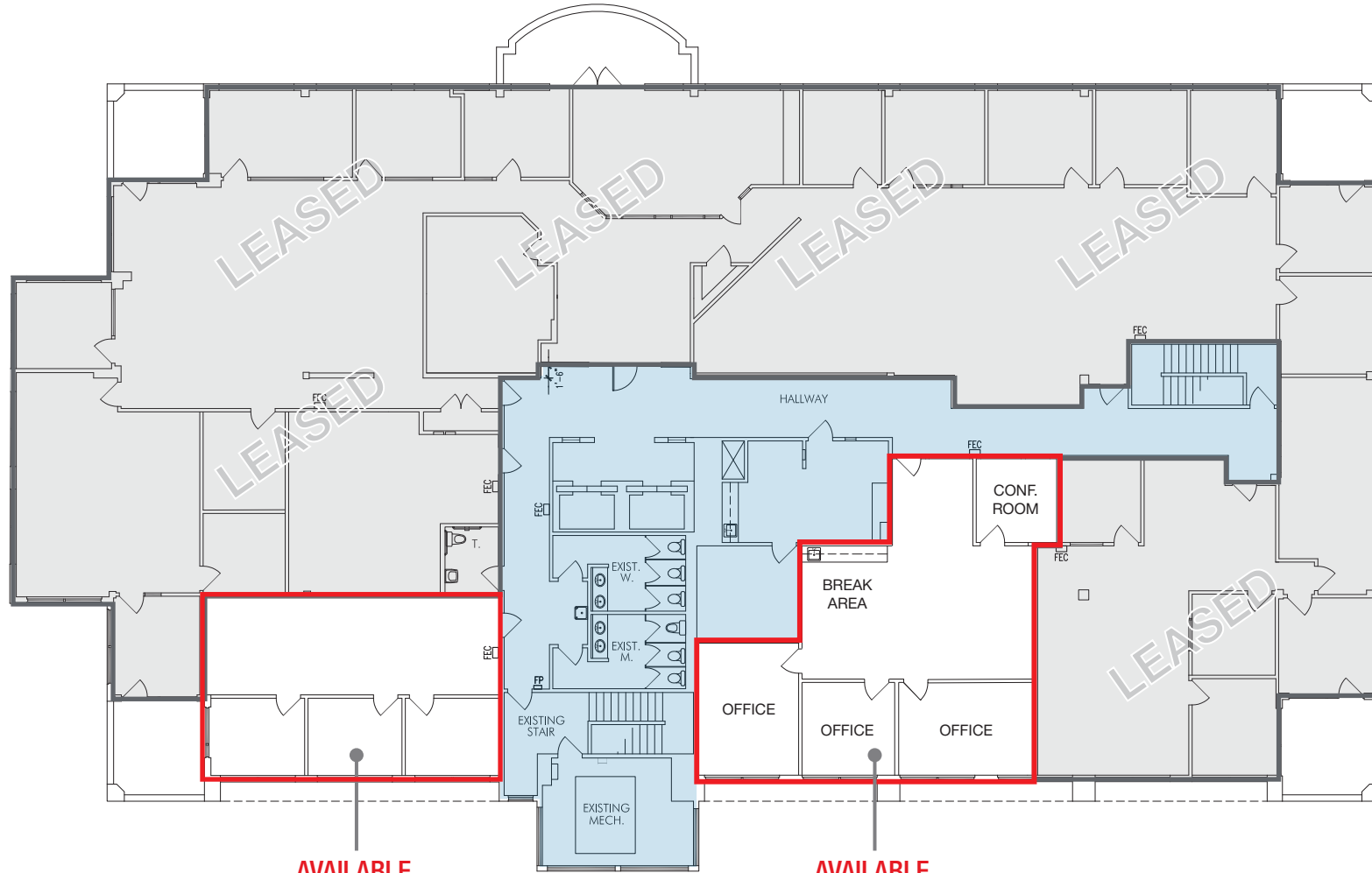
- Available
- Leased
- Common Area

For Lease

# UPTOWN PROFESSIONAL OFFICE SPACE

1700 Louisiana Blvd. NE | Albuquerque, NM 87110

3RD FLOOR



- Available
- Leased
- Common Area

**AVAILABLE**  
Suite 340: ±941 RSF

**AVAILABLE**  
Suite 310: ±1,449 RSF  
*(Conceptual plan based on 5-year minimum lease)*



For Lease

## UPTOWN PROFESSIONAL OFFICE SPACE

1700 Louisiana Blvd. NE | Albuquerque, NM 87110



**NAI**SunVista

505 878 0001 | [sunvista.com](http://sunvista.com)      
2424 Louisiana Blvd. NE | Suite 100 | Albuquerque, NM 87110

**DJ Brigman** SIOR, CCIM  
DJ@sunvista.com  
505 998 1562

**Dave Hill** CCIM, SIOR  
dave@sunvista.com  
505 238 6413

# For Lease

## UPTOWN PROFESSIONAL OFFICE SPACE

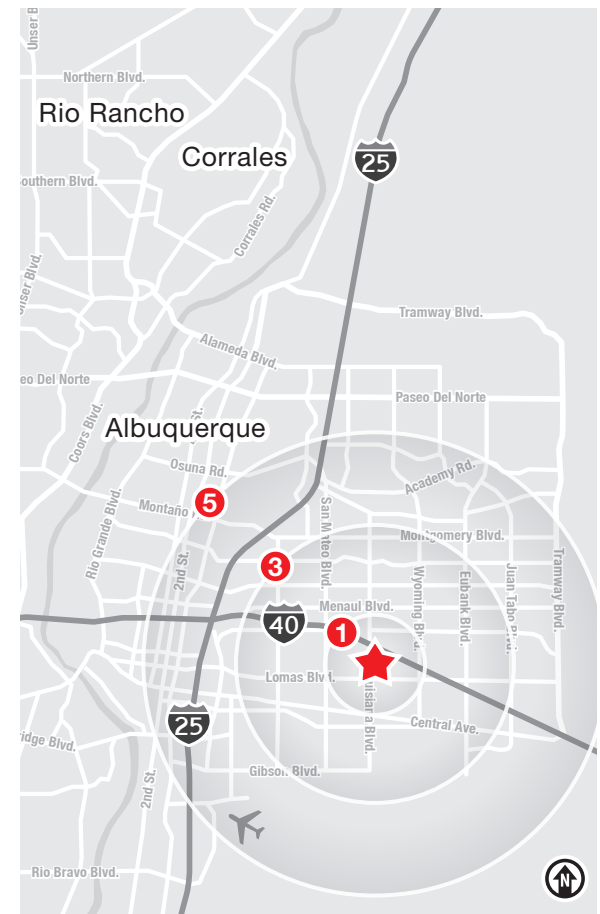
1700 Louisiana Blvd. NE | Albuquerque, NM 87110



### LOCATION

Demographics	1 mile	3 mile	5 mile
Total Population	13,454	137,431	291,946
Average HH Income	\$69,828	\$79,244	\$83,864
Daytime Employment	15,448	81,252	213,047

2024 Forecasted by Esri



The information contained is believed reliable. While we do not doubt the accuracy, we have not verified it and make no guarantee, warranty or representation about it. It is your responsibility to independently confirm its accuracy and completeness. Any projection, opinion, assumption or estimated uses are for example only and do not represent the current or future performance of the property. The value of this transaction to you depends on many factors which should be evaluated by your tax, financial, and legal counsel. You and your counsel should conduct a careful independent investigation of the property to determine that it is suitable to your needs.

**NAI**SunVista

**DJ Brigman** SIOR, CCIM  
 DJ@sunvista.com  
 505 998 1562

**Dave Hill** CCIM, SIOR  
 dave@sunvista.com  
 505 238 6413